

Opus Suite  
Conference

STOCKHOLM

# Let's talk data!

From data to information

by Systecon  
**opus  
suite**

 **Systecon**

Opus Suite  
Conference

STOCKHOLM

# How data collection works

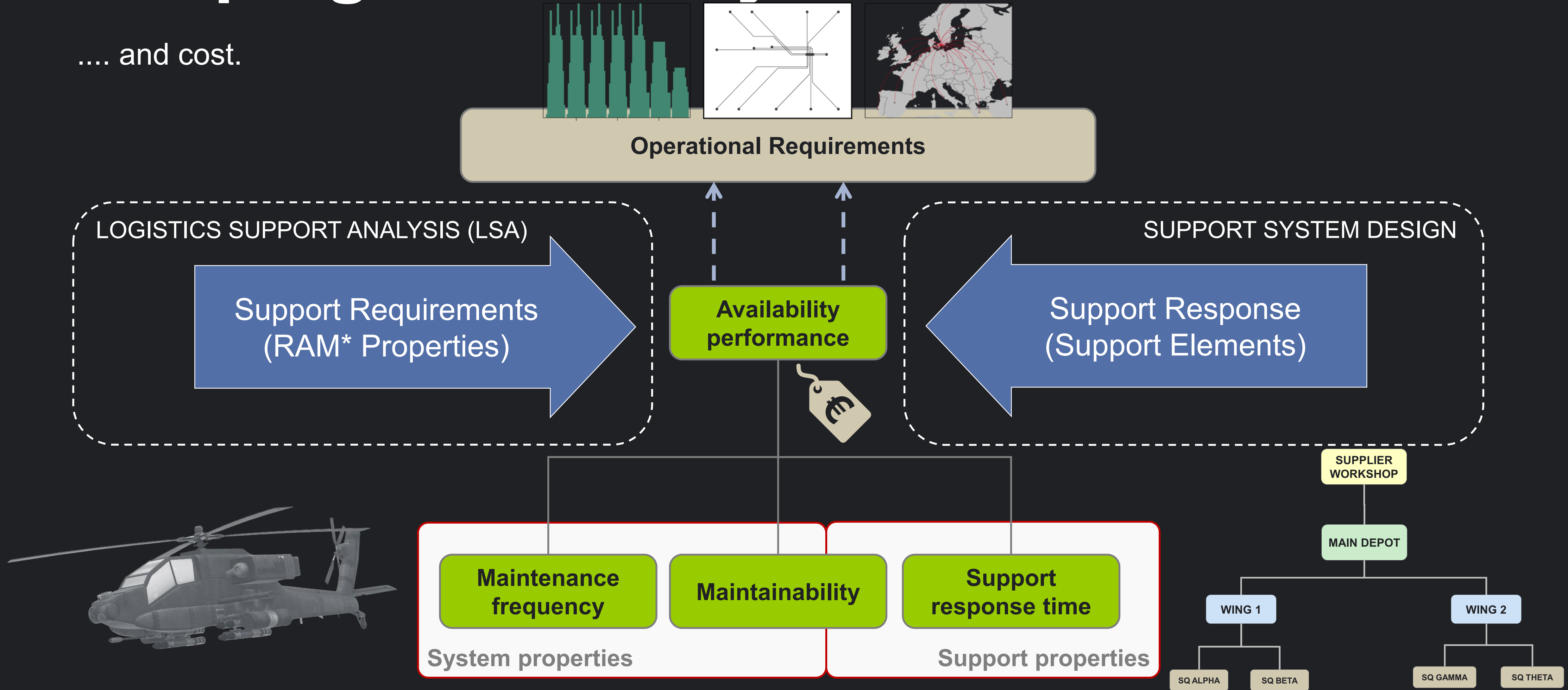
Nordic Opus Suite Conference  
Stockholm, April 9th, 2024  
Younes Lousseief

by Systecon  
**opus  
suite**

 **Systecon**

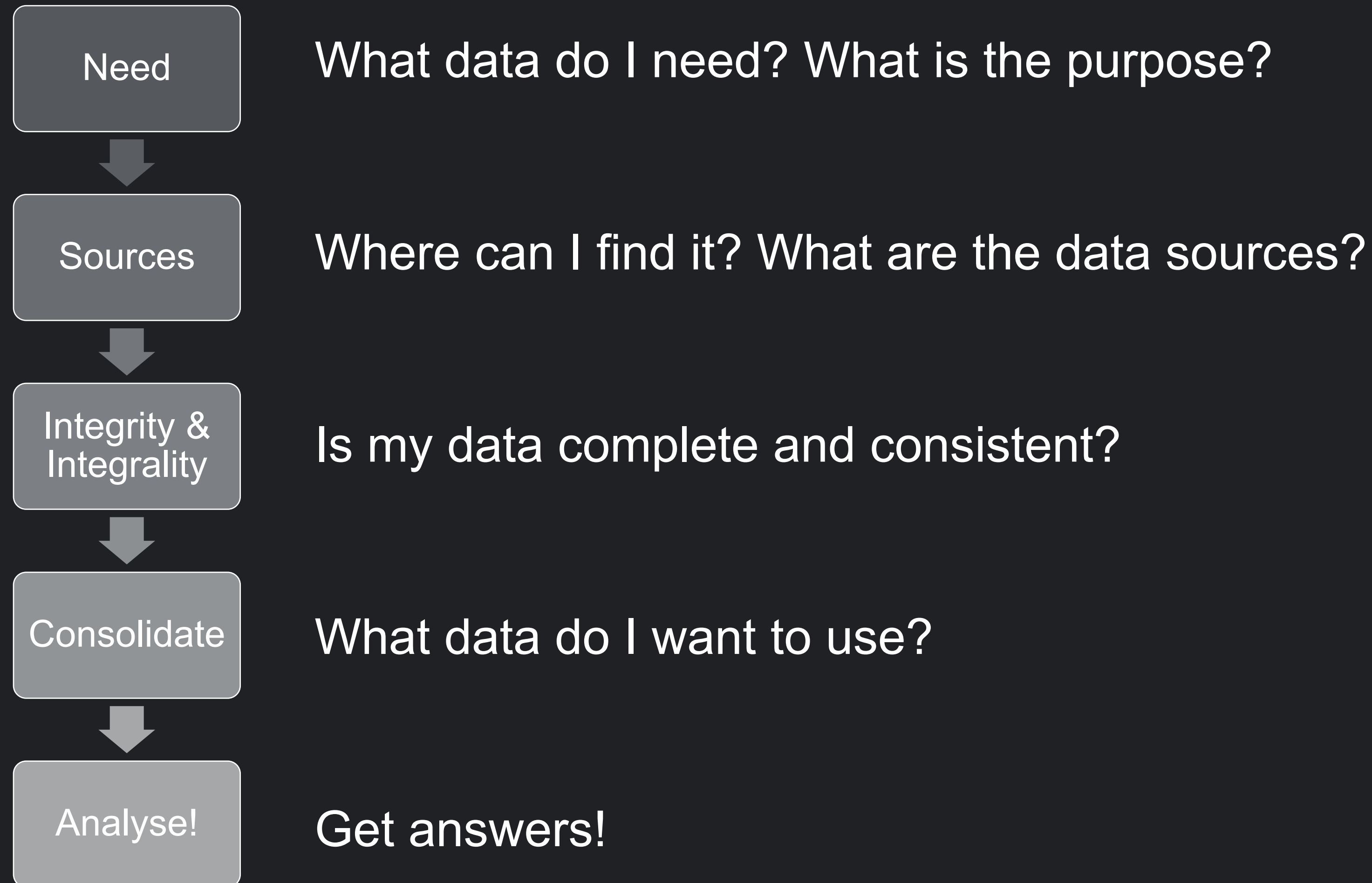
# Shaping Availability Performance

.... and cost.

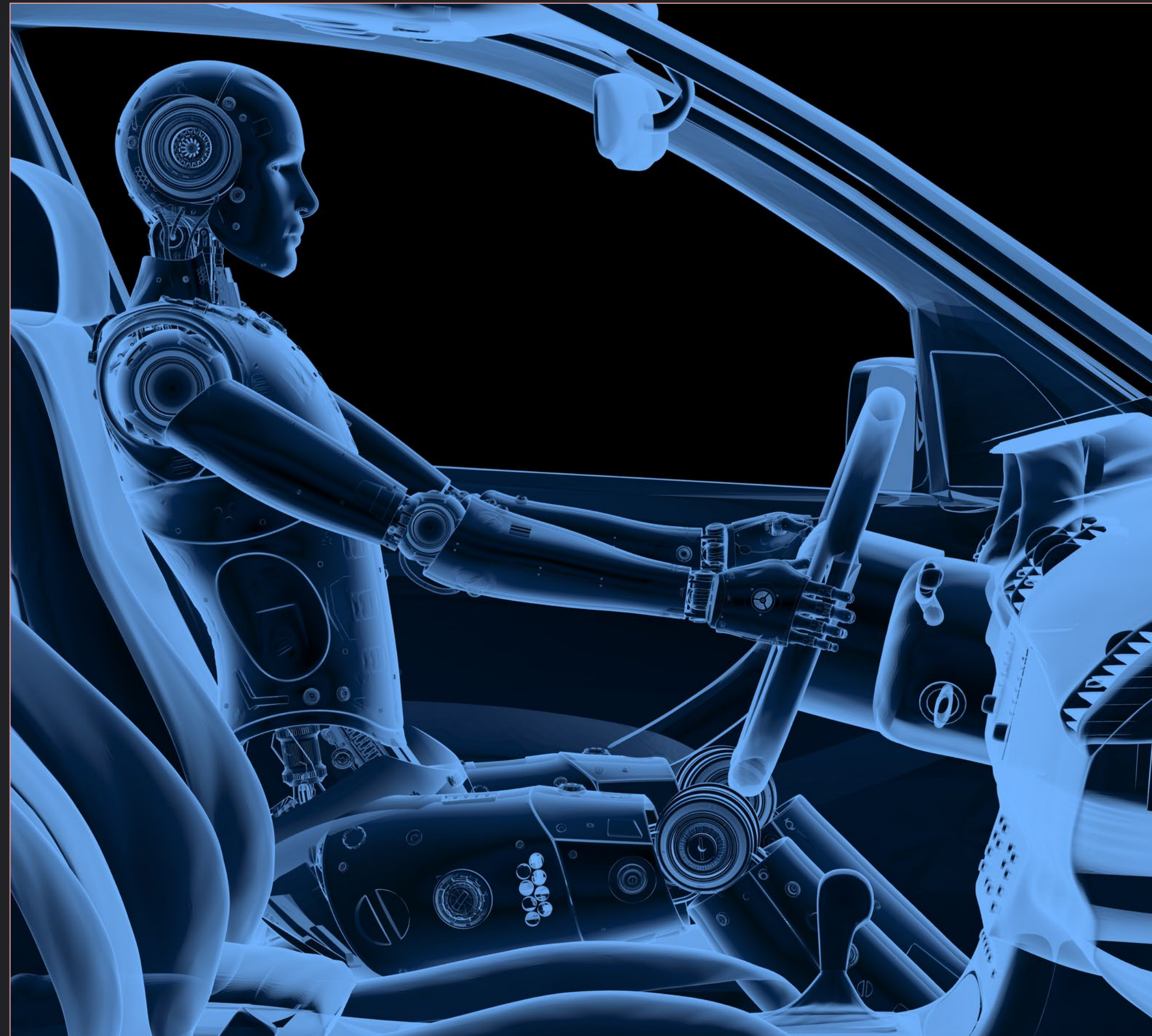


\*RAM = Reliability, Availability, Maintainability


# Data collection steps



# Data need - an analogy



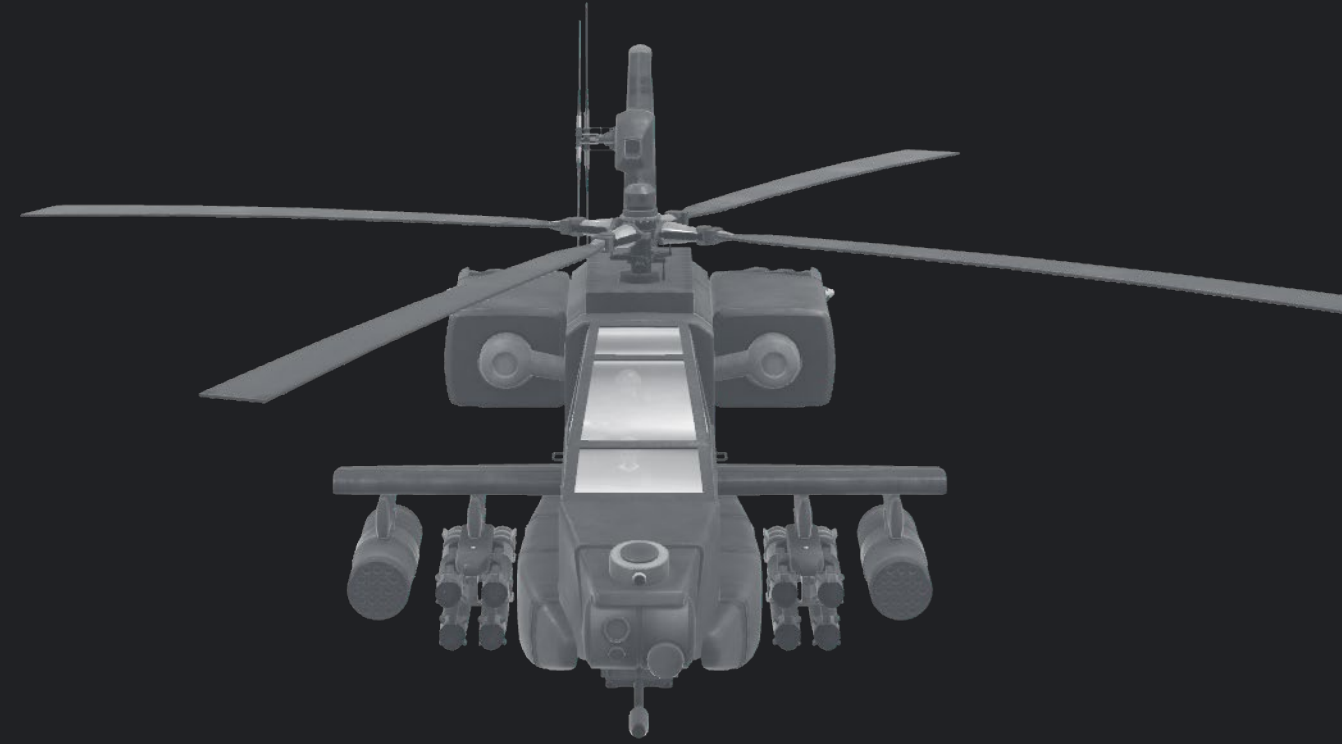
# But what data do I need?



Capability to fulfill mission profile

- Overall system reliability
- Overall support response time
- Detailed mission definition
- Detailed operational profile & system requirements

# Data granularity

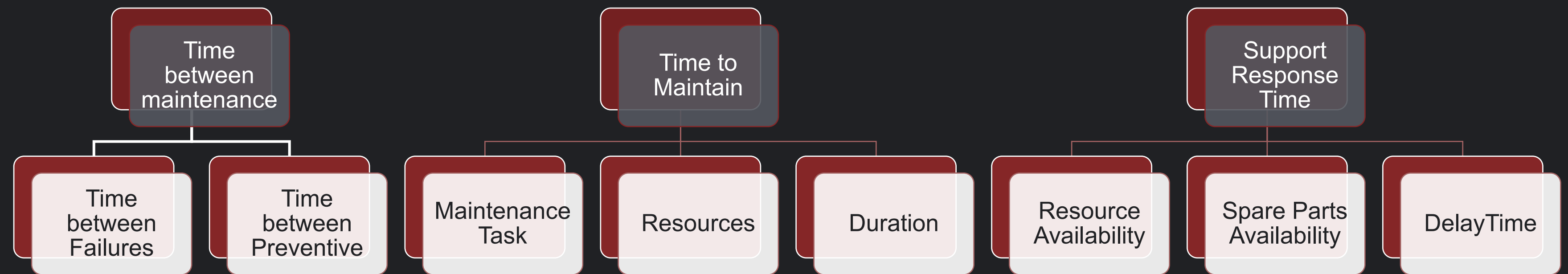
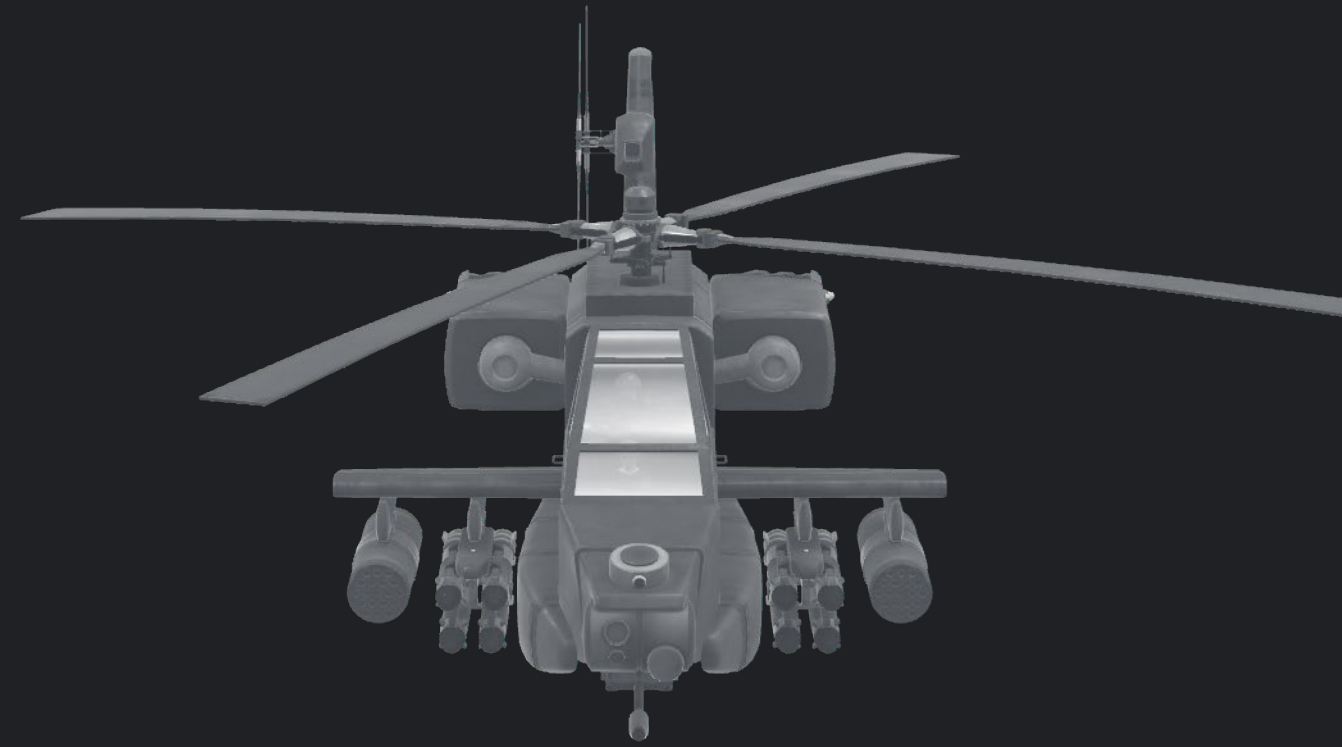


Time  
between  
maintenance

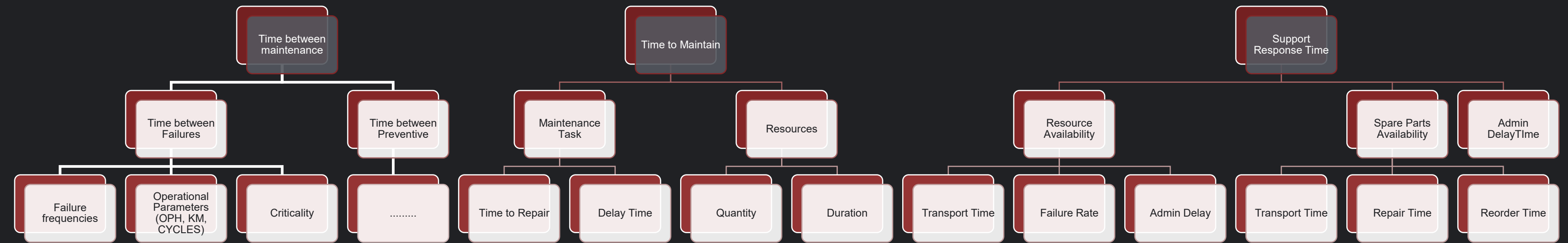
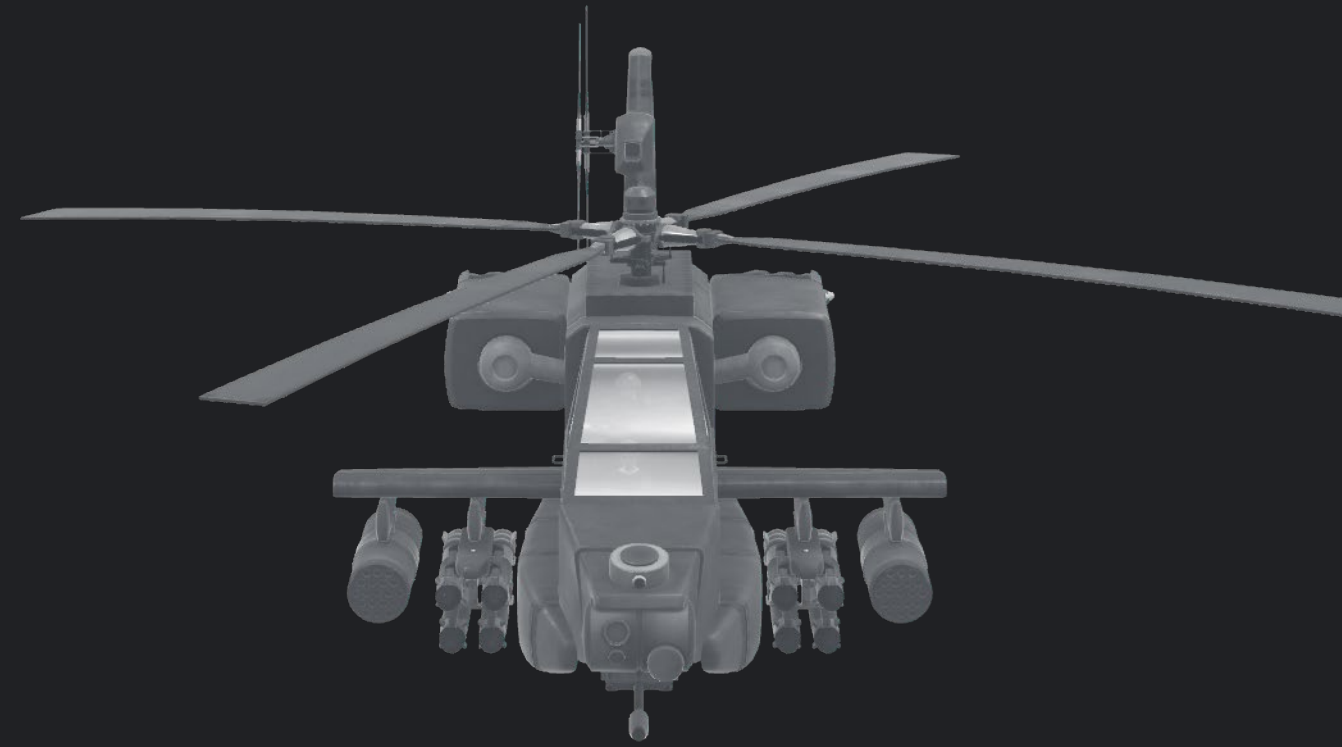
Time to  
Maintain

Support  
Response  
Time

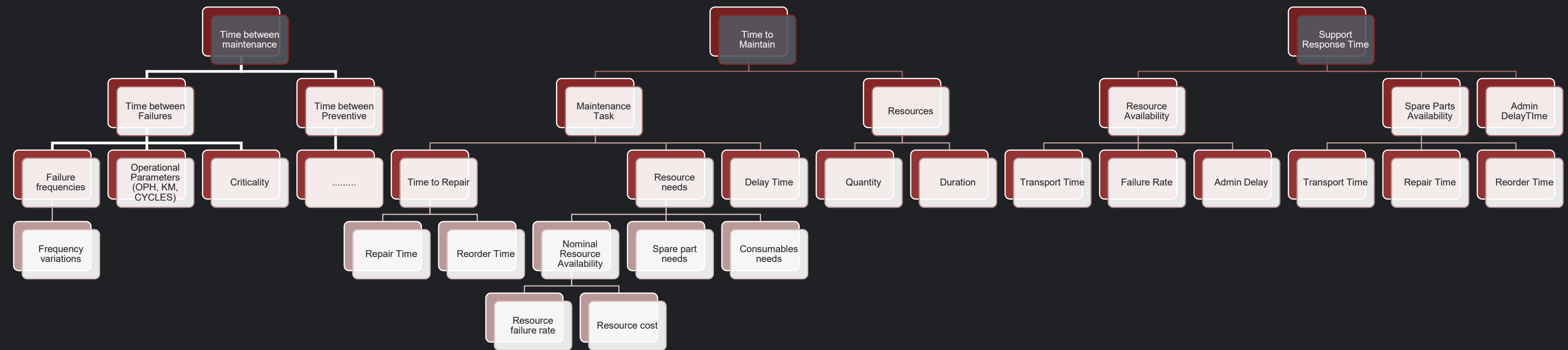
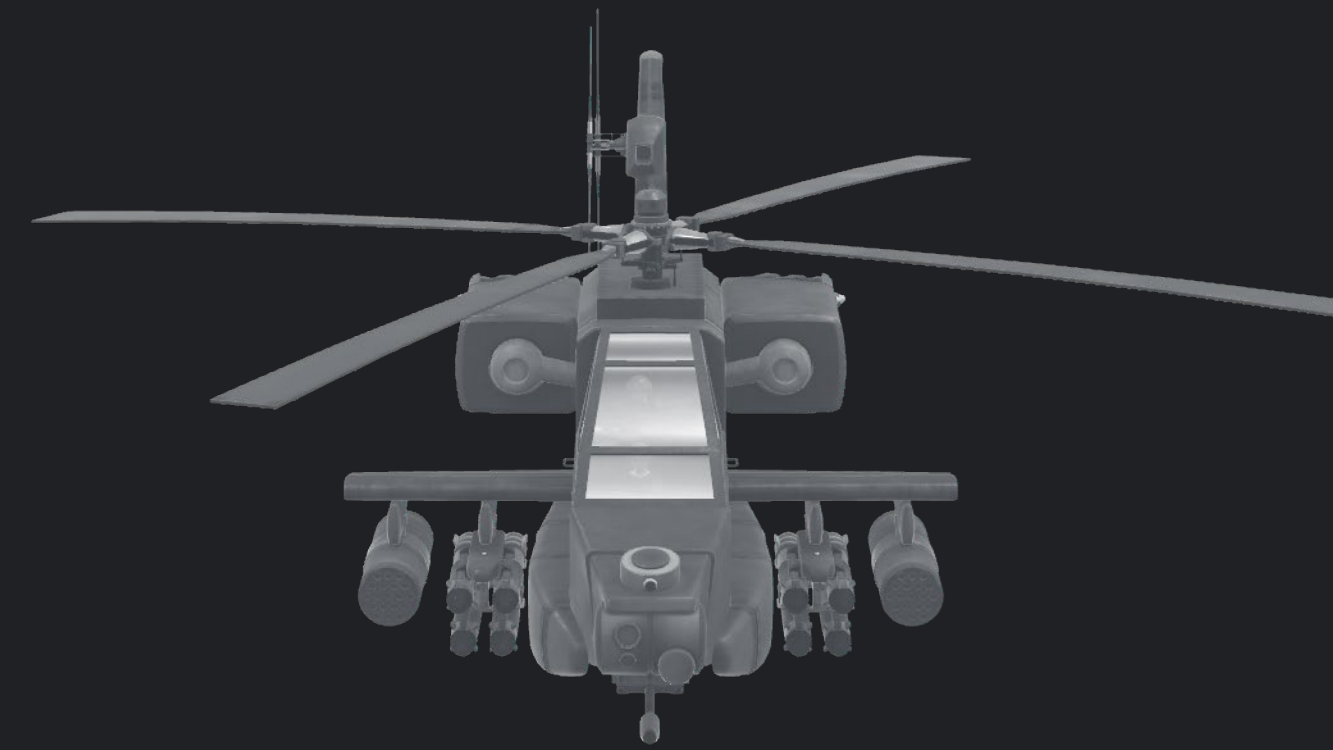
# Data granularity



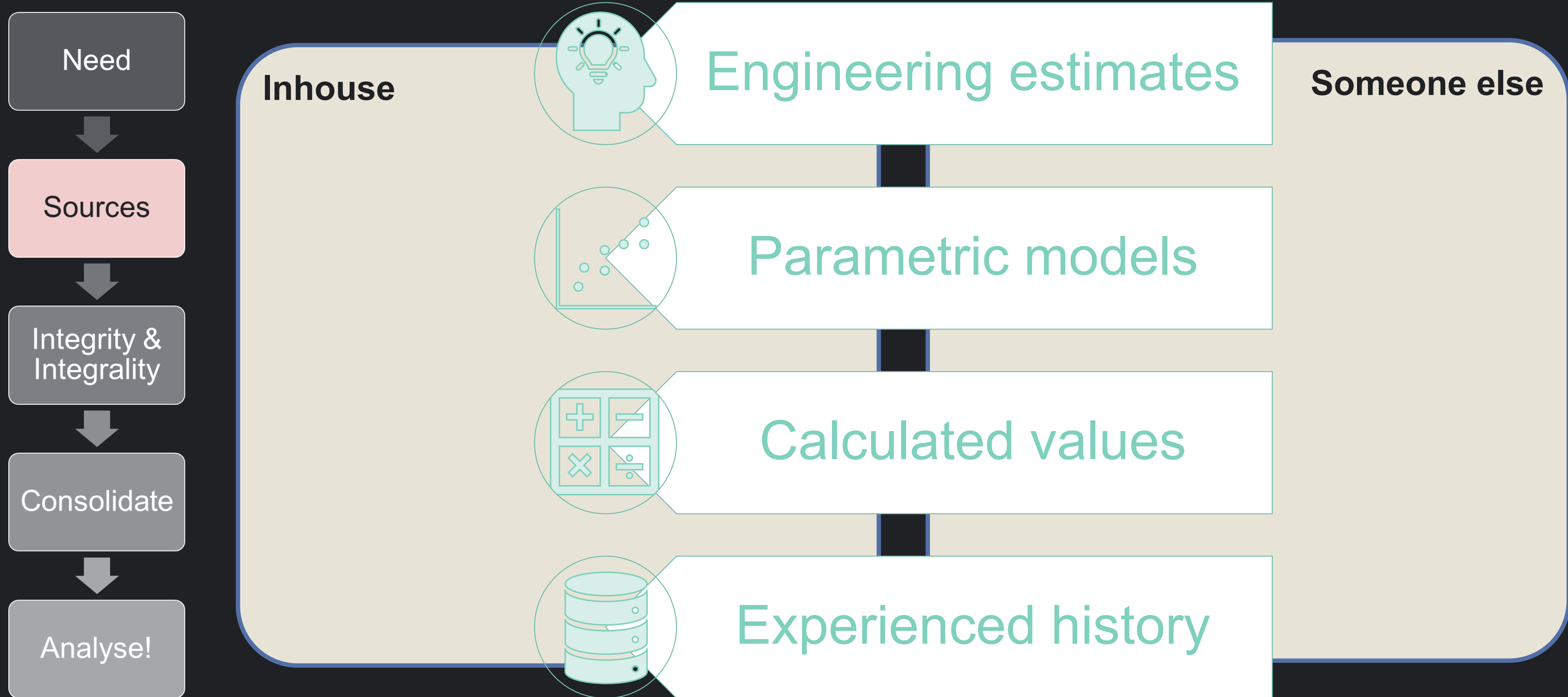
# Data granularity



# Data granularity



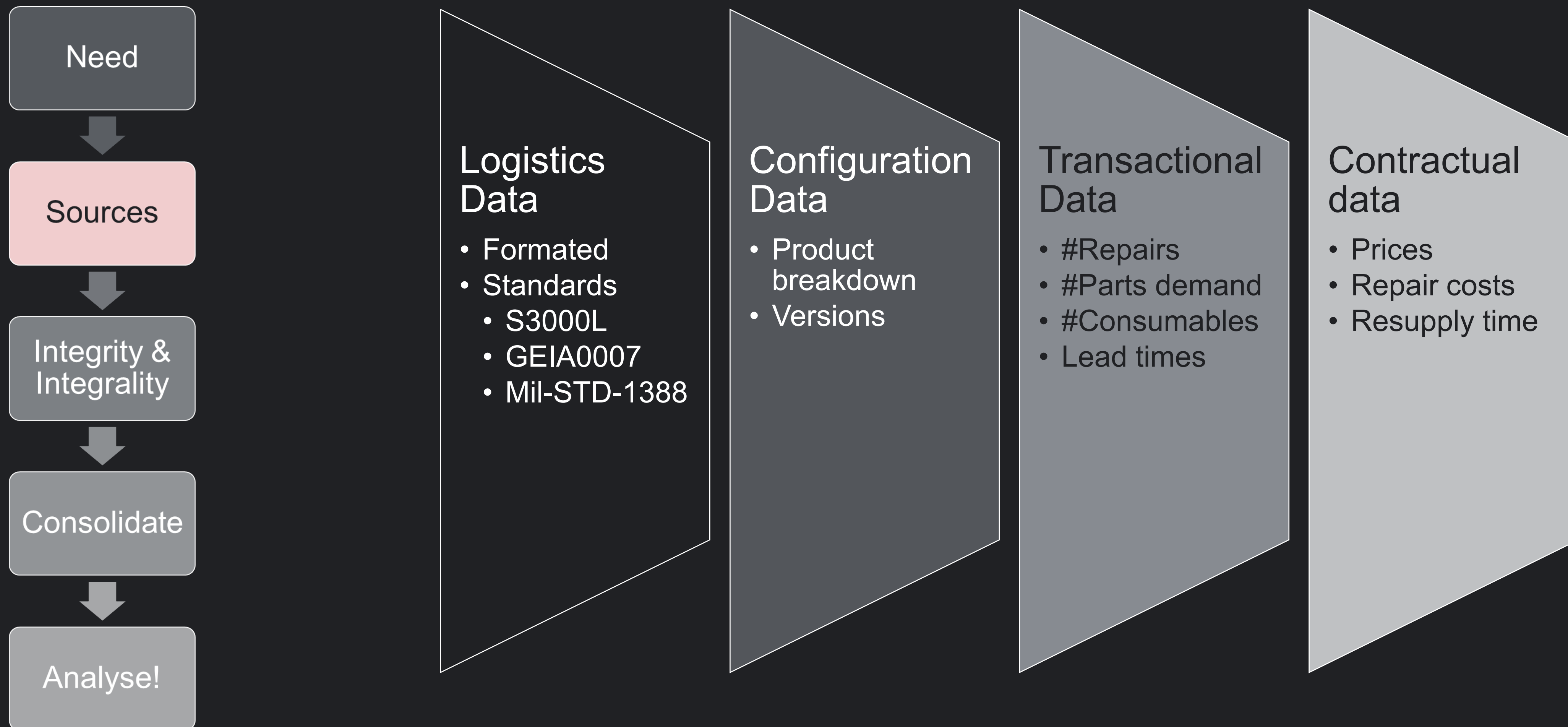
# Where does data come from?



# Data sources



# Types of data



# Quality of Data



We don't have any failure modes...



There is only history of spares demand, no product breakdown structure

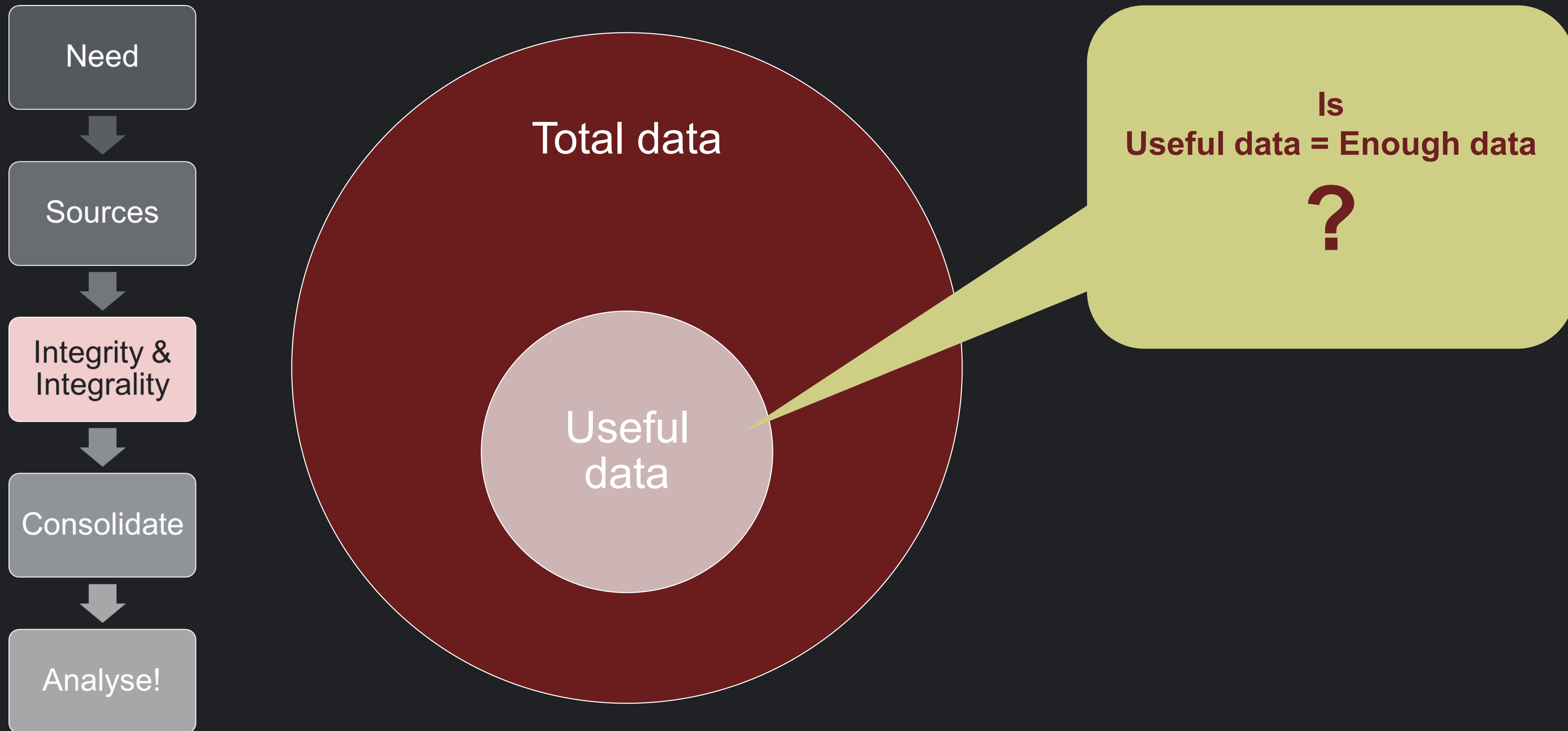


There are no links between maintenance tasks and failures or planned maintenance

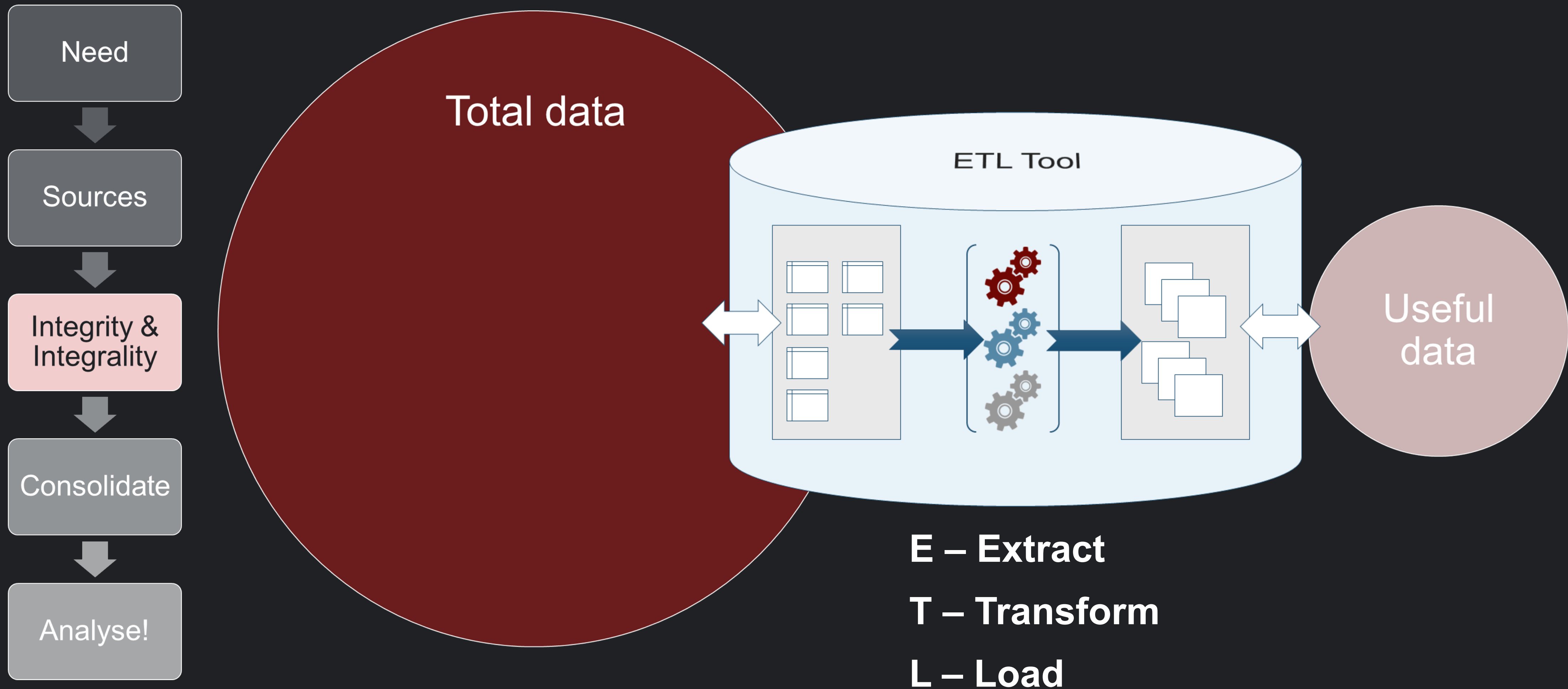


The item identifiers are different between data source A and B...

# Quality of Data



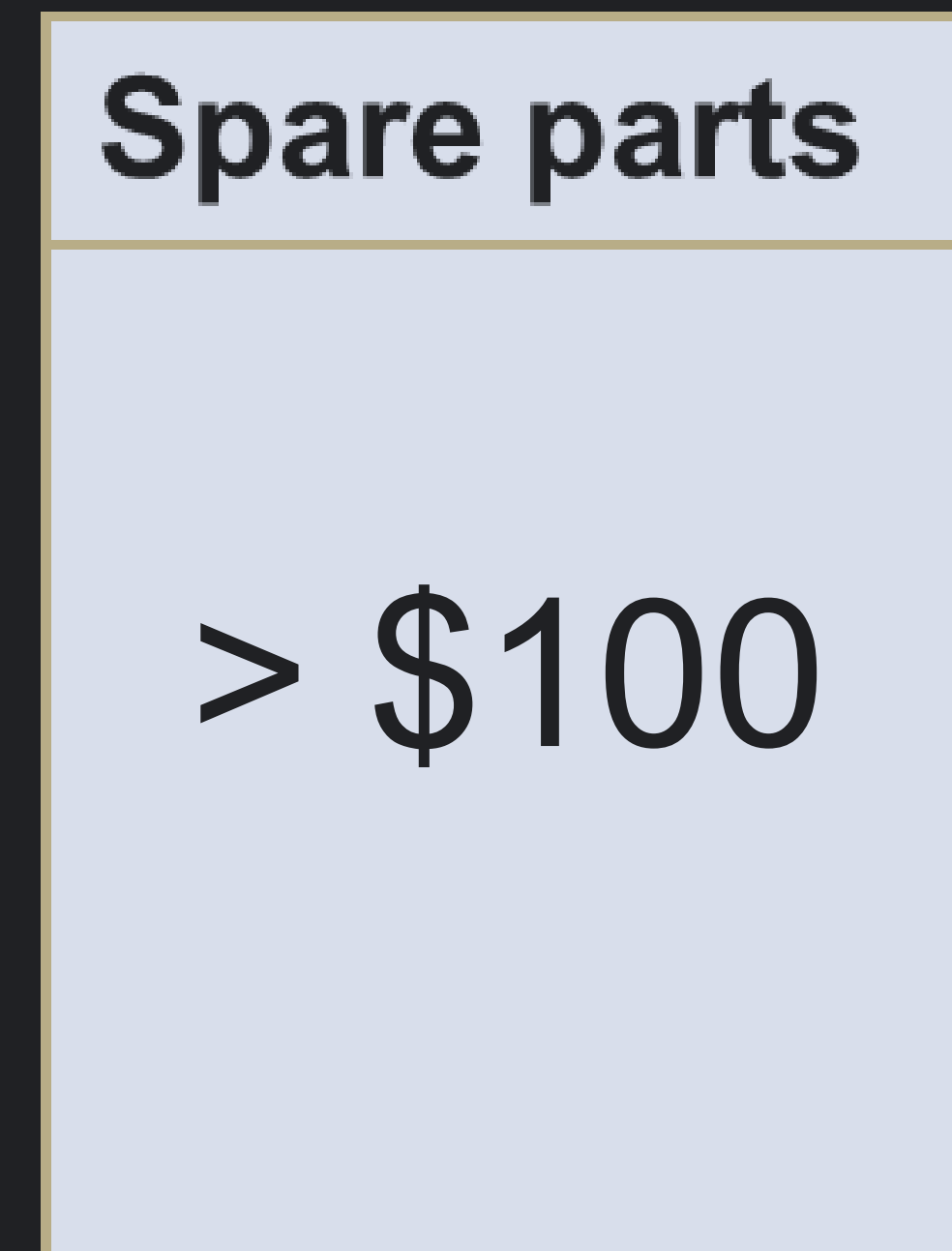
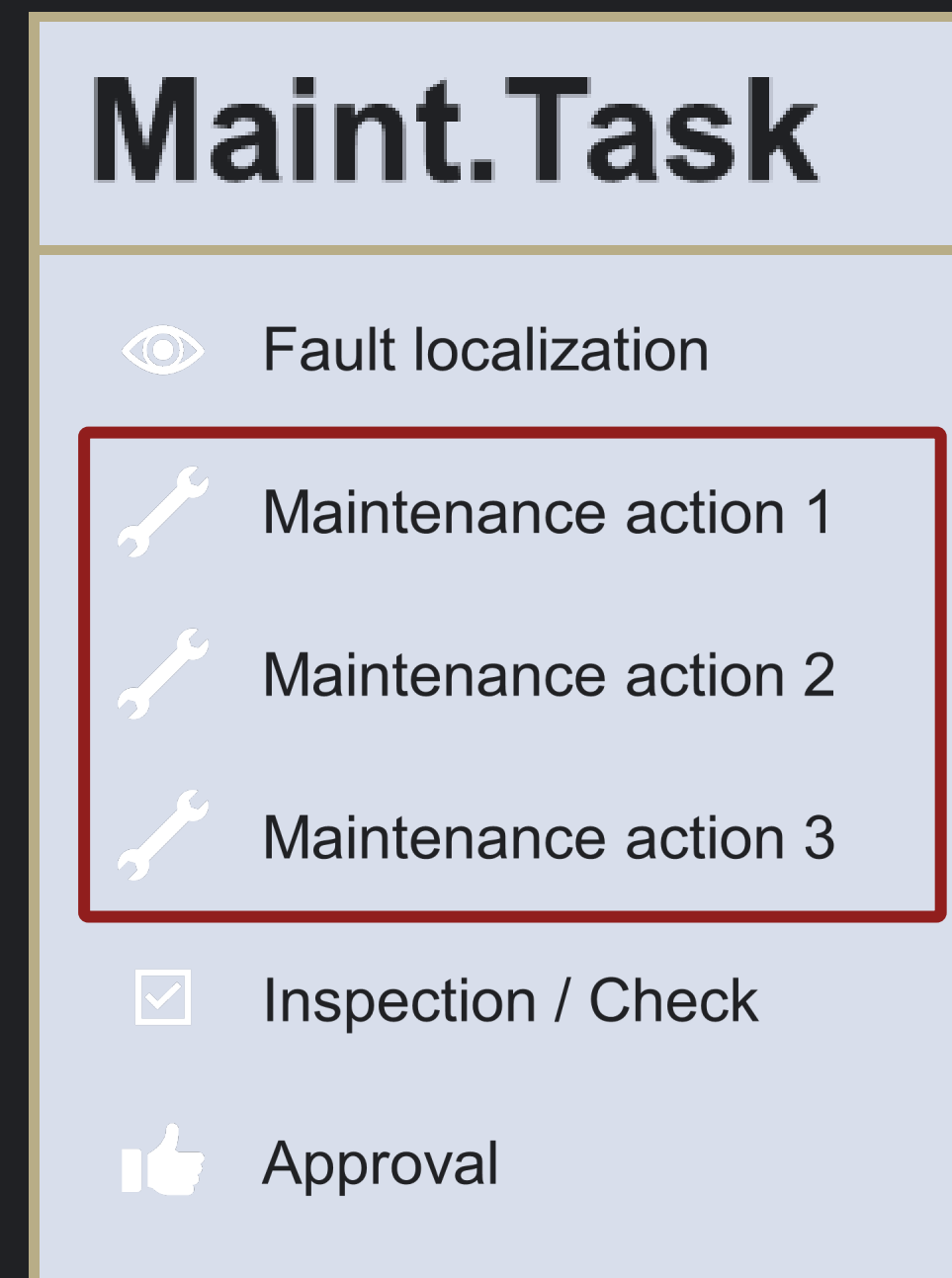
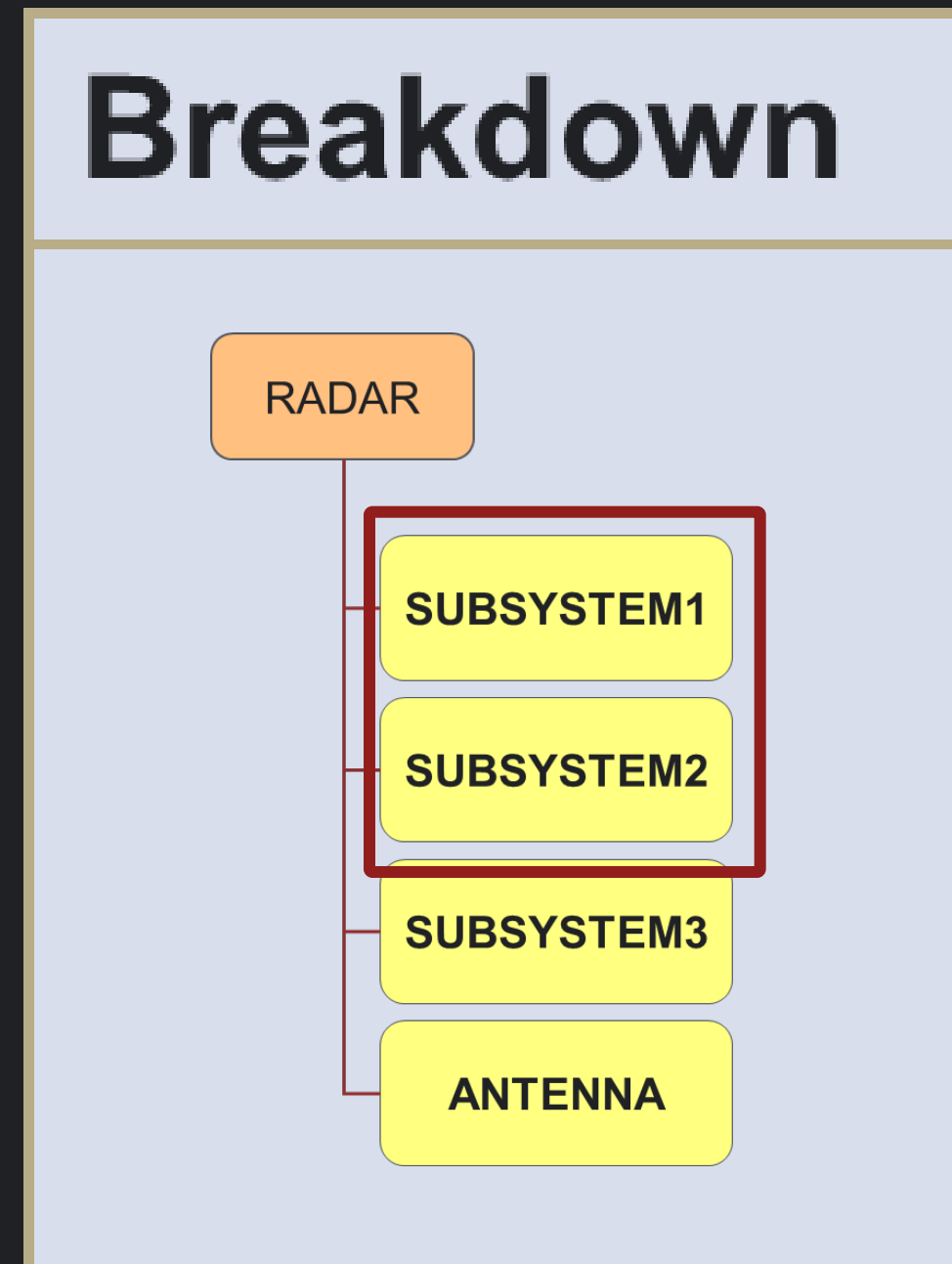
# Completeness of data



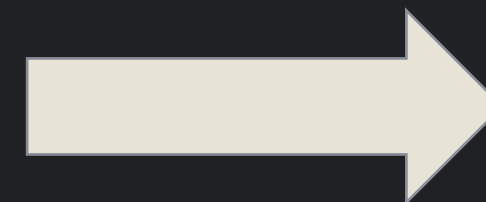
# Referential integrity of data



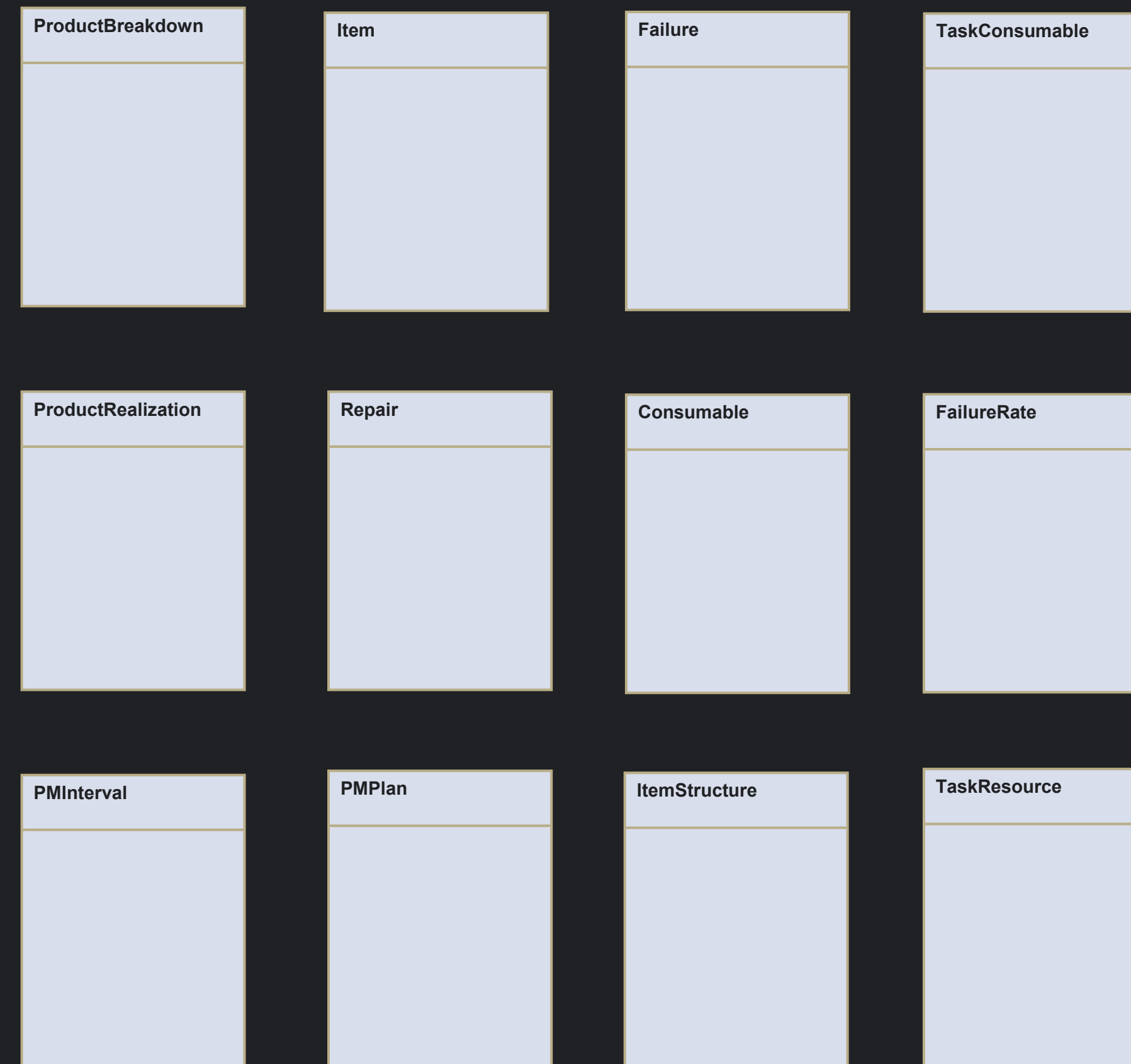
# Data Consolidation



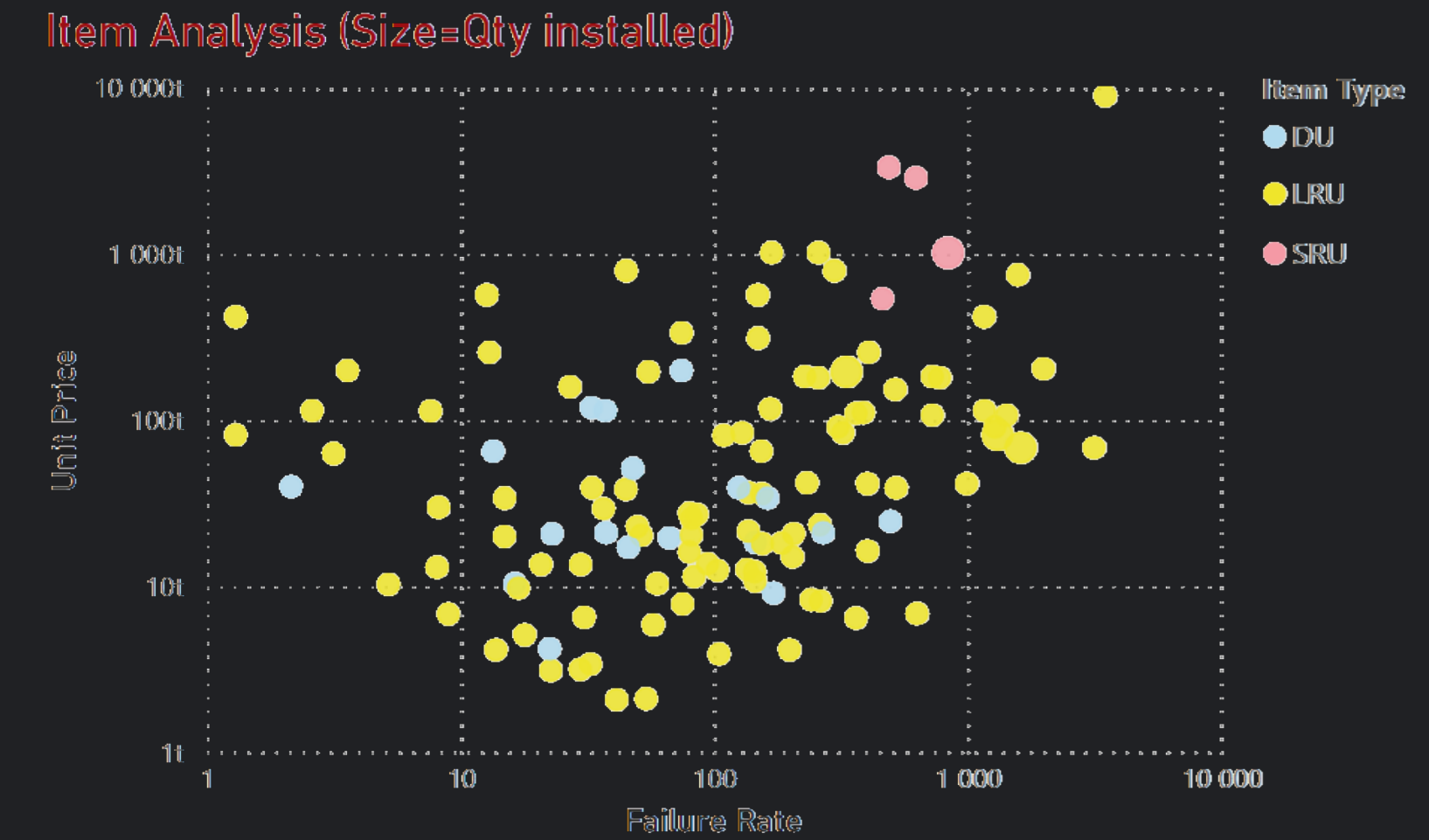
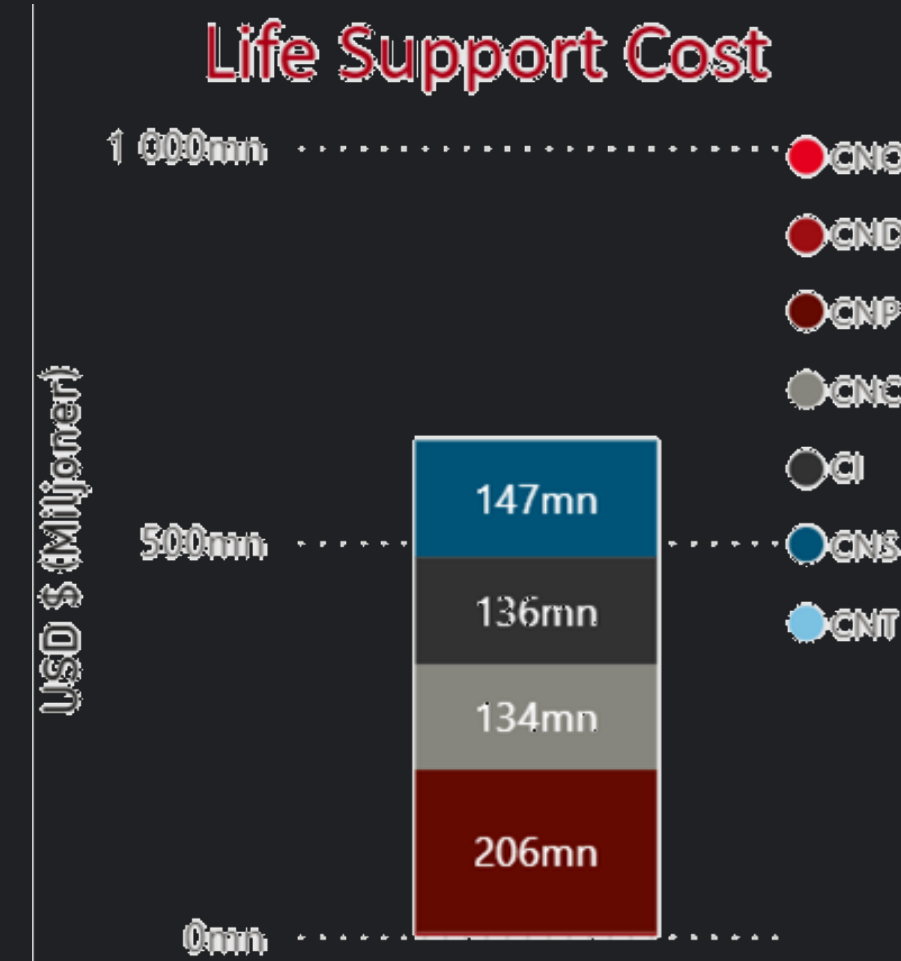
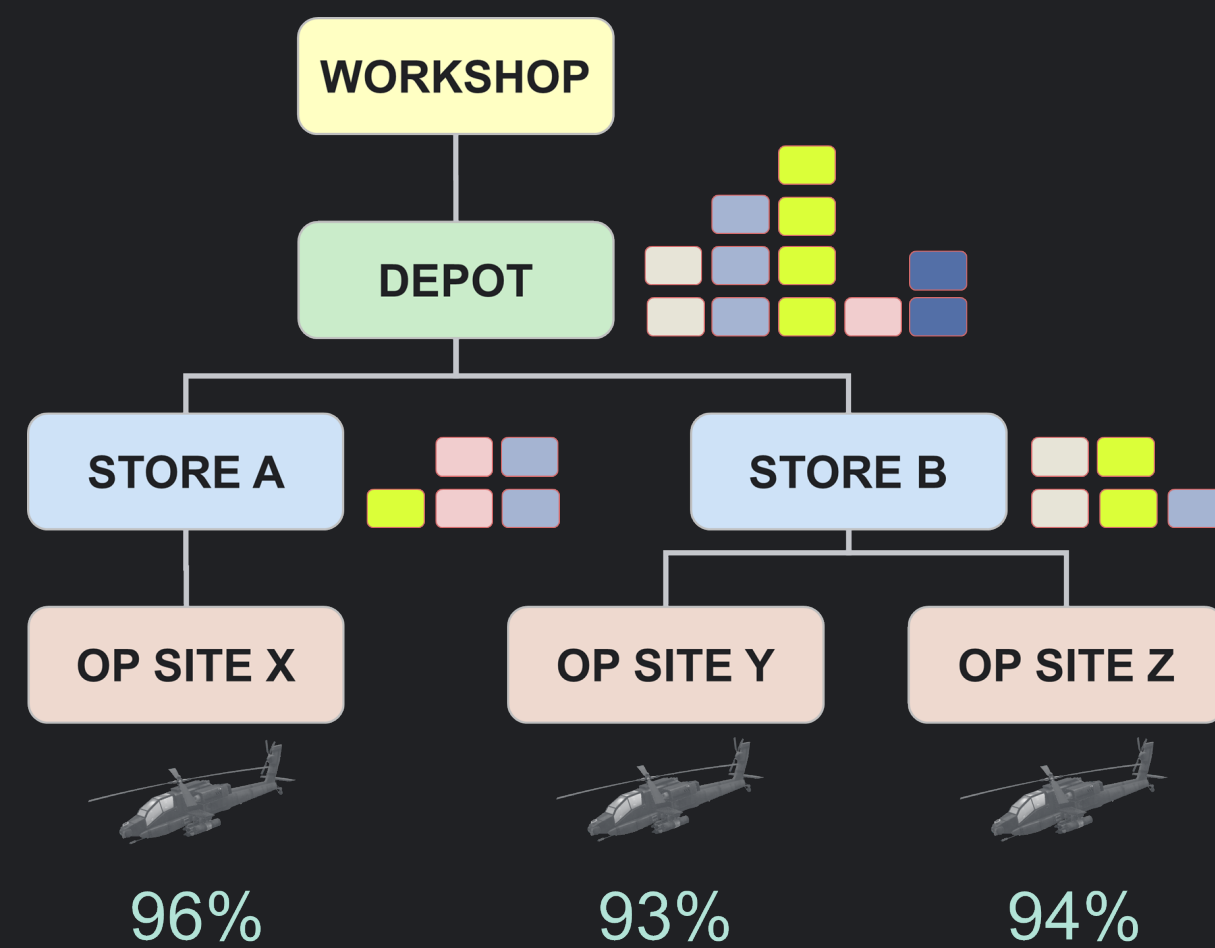
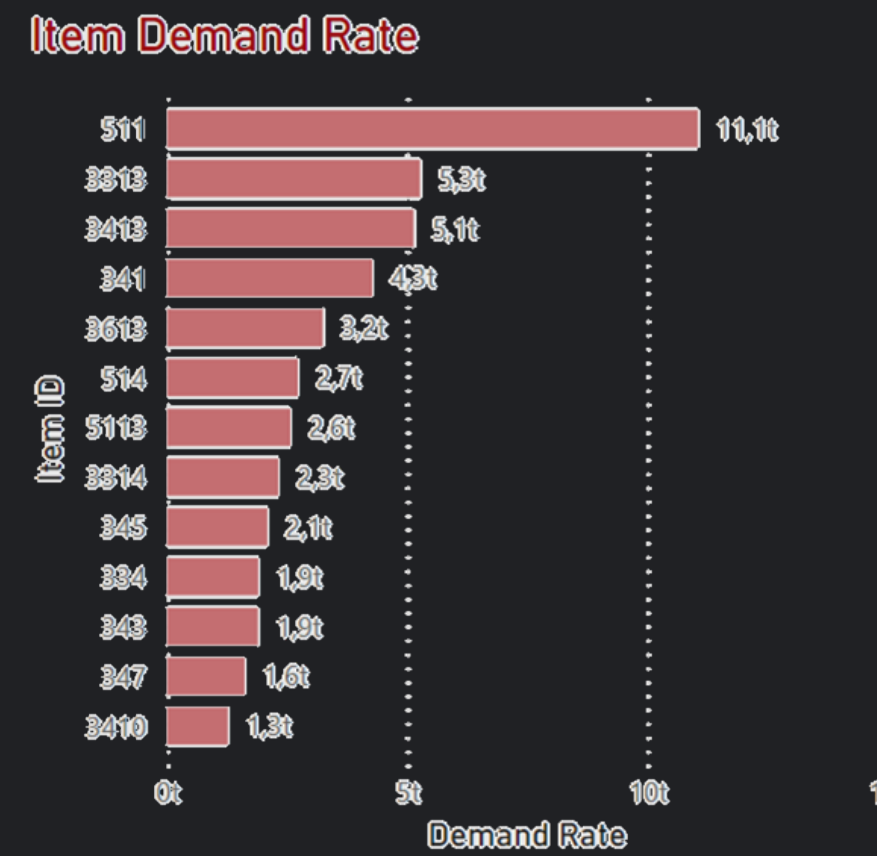
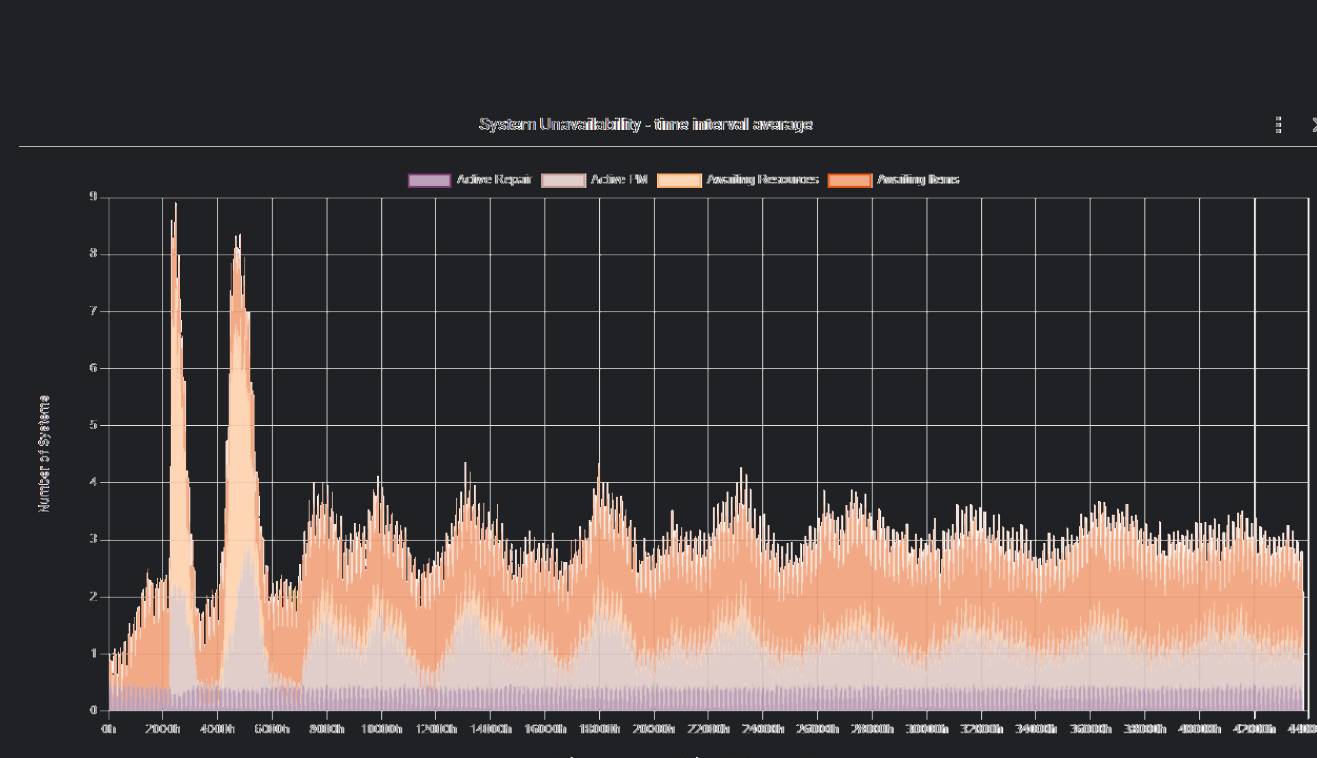
# Data Consolidation



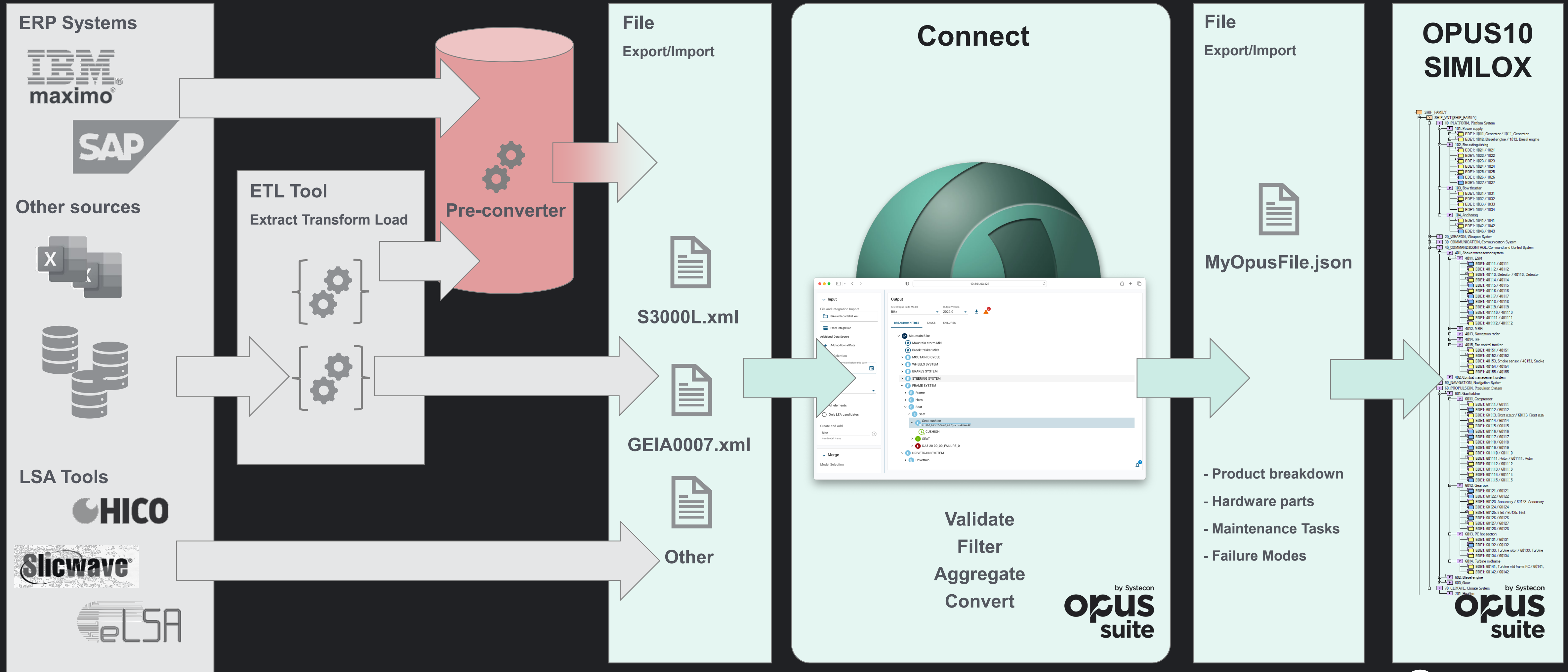
## Analysis data model



# Ready to perform analysis!



# Data collection applied



# Goal: Informed decision support

by Systecon  
**Opus**  
suite



# Thank you.

---

